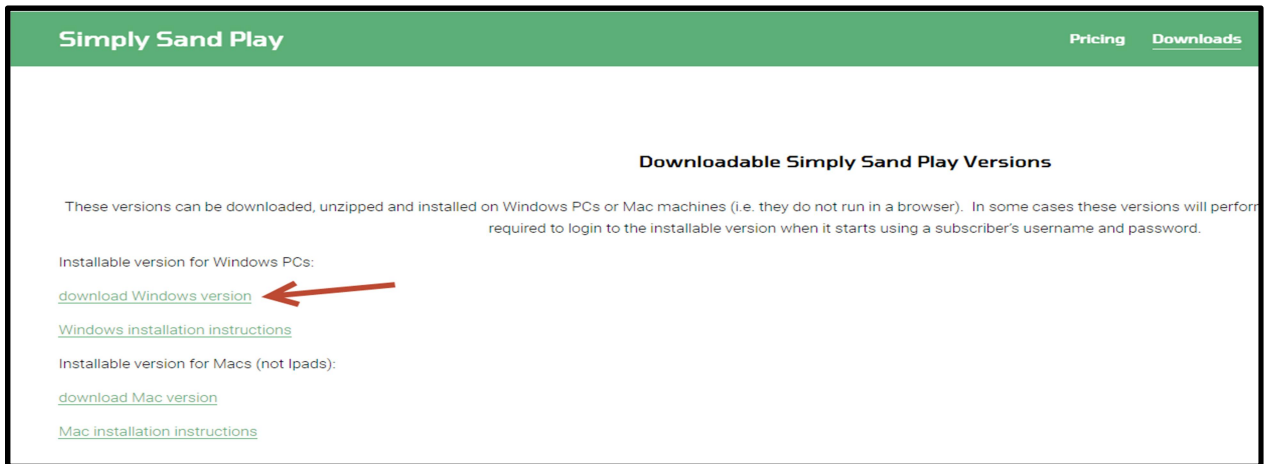


To install Simply Sand Play on a **Windows PC** follow these steps:

1. Go to <https://simplysandplay.com/downloads> and click on the “download now” link for the PC version.



2. Depending on your browser you may be asked where you want to save the file or it may go straight to your download folder. Chrome (shown below) typically shows the download on the bottom left of the browser screen. You can click on the arrow by the file name and then click “Show in folder” to take you directly to the file location. If using another browser go to the download location using File Explorer.

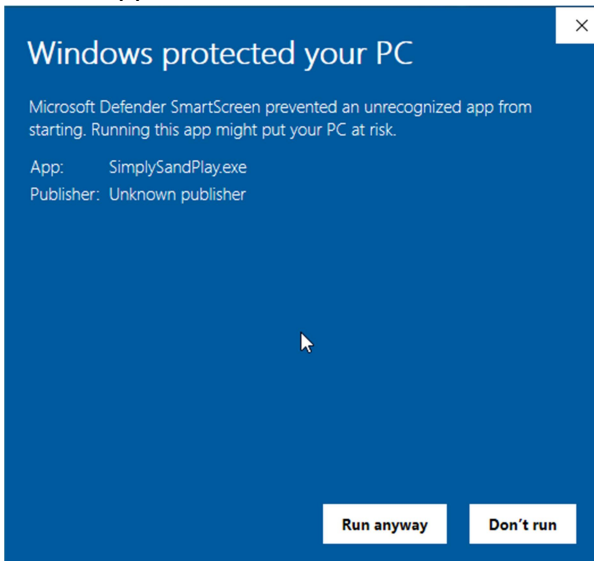


3. Once you locate the SimplySandPlayInstall_PC_0731.exe (note: version date at end of file name will change occasionally) right click on it and select “run as administrator”. If you are not an administrator on your computer you will get a popup asking for the administrator’s username and password. If you do not have administrator rights just install it by double clicking the file. (If the undo and reload features do not work in the application it’s because it was not installed as administrator but it’s likely this feature will still work.)

4. You may get a warning from Windows like this. It's ok to proceed. Click on "More Info".



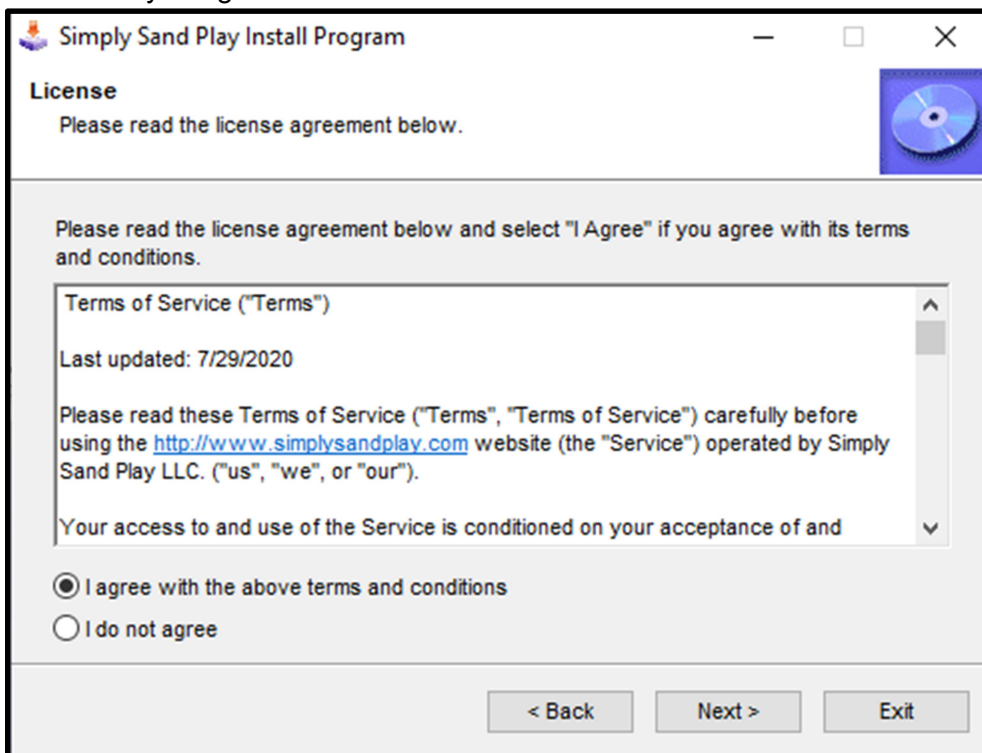
5. Click on "Run Anyway". We are working on getting our application certified but be assured it will not harm your computer. There could be a delay before the application screen appears. This is due to a virus scan most likely.



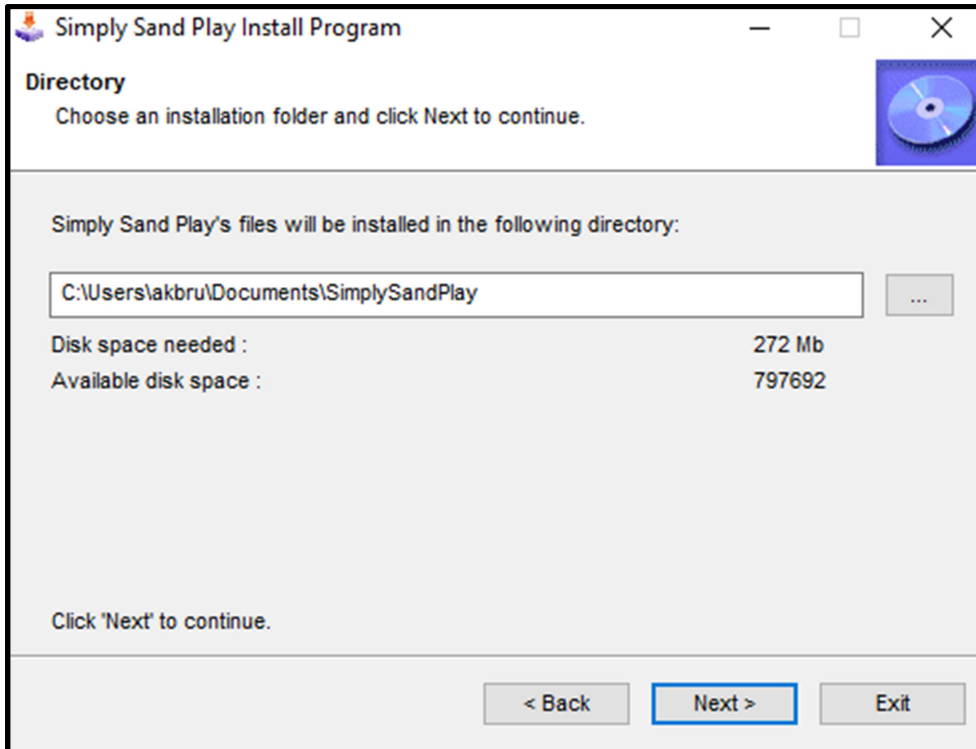
6. The installation program will start. Click "Next".



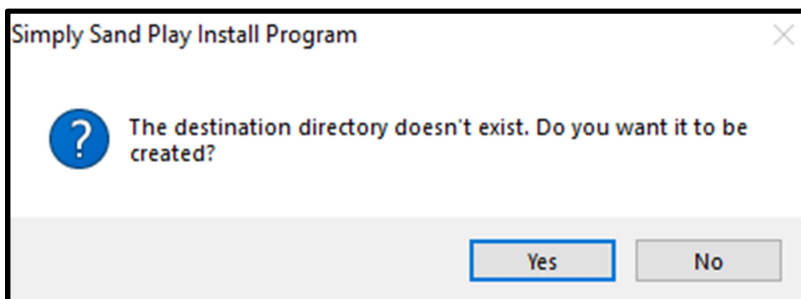
7. Tick box if you agree to terms and conditions and click "Next".



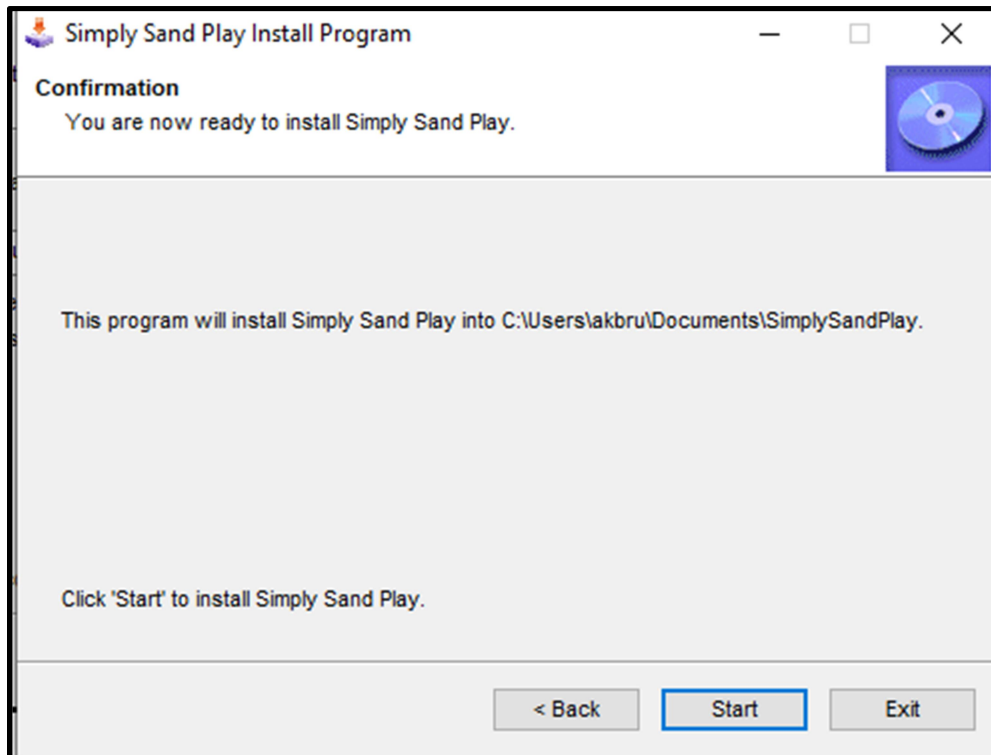
8. Accept the default installation location. Click "Next".



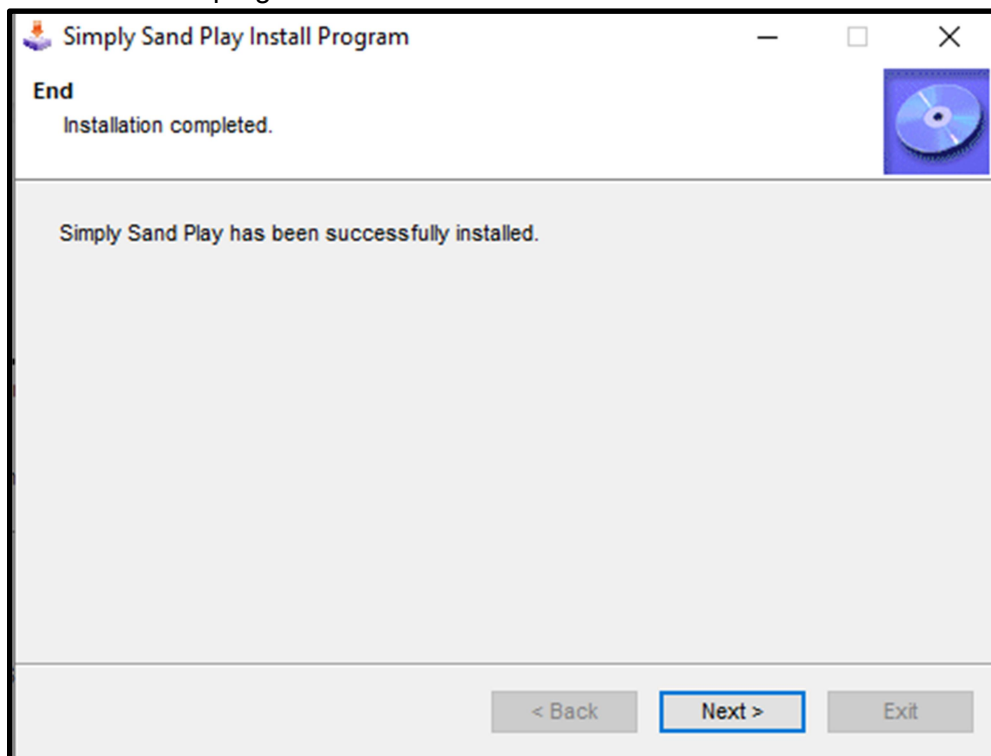
9. Click "Yes".



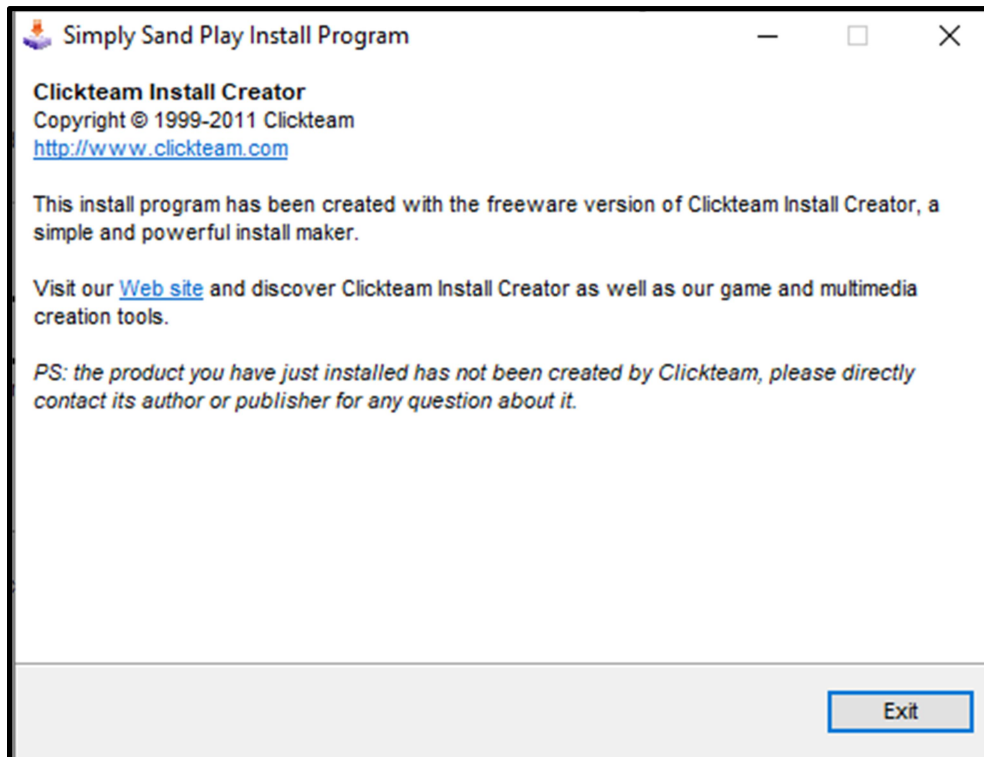
10. Click "Start".



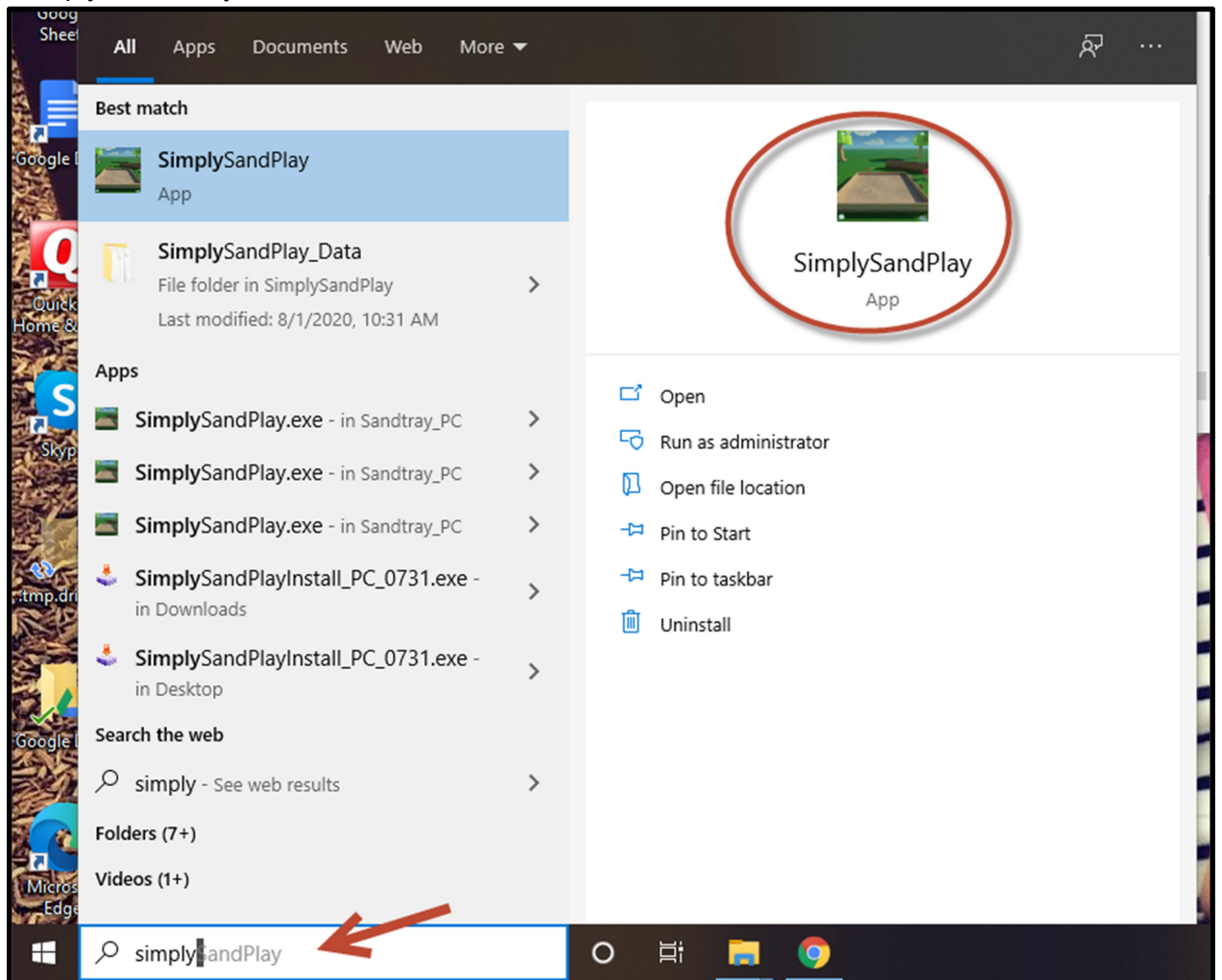
11. The installation program will install the files. Click "Next".



12. Click "Exit".

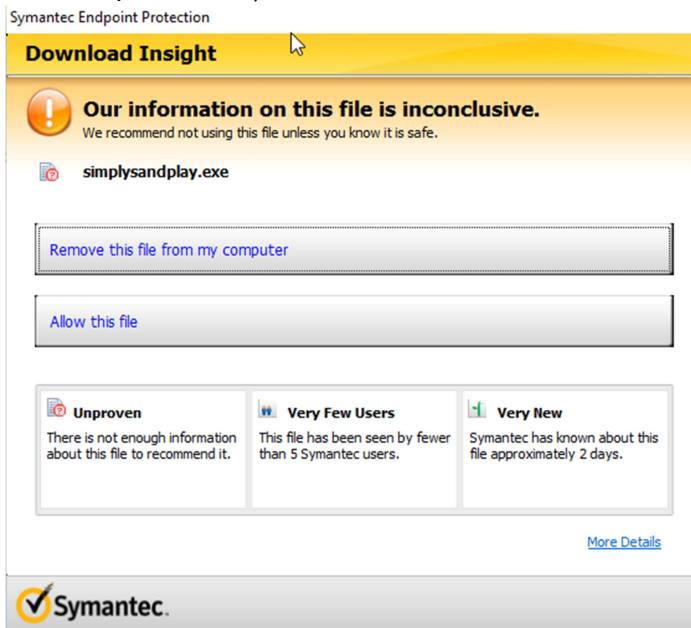


13. A shortcut should now be on your desktop. You can also start the application by typing “Simply Sand Play” in the windows search bar.

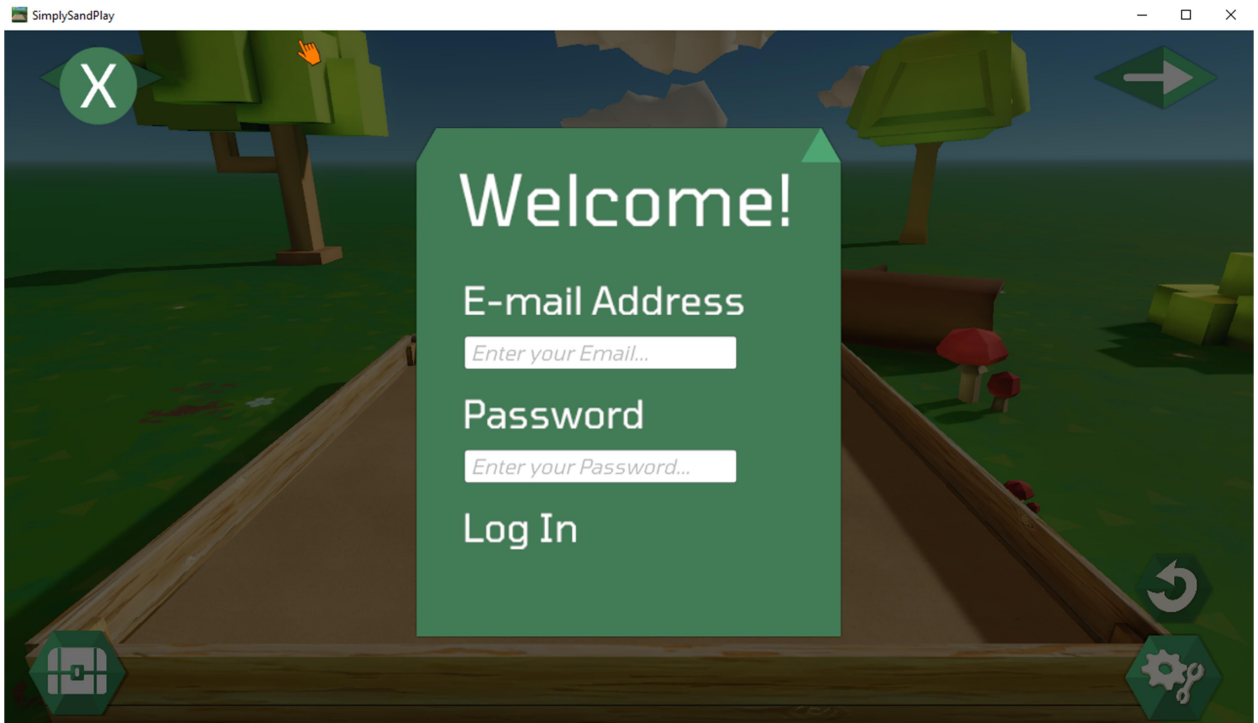


14. Depending on your virus protection you may get a warning. You can allow this file to run. (Screenshot below is only an example. Your machine probably has different

antivirus protection.)



15. When the application starts enter the email address and password of the person who has a subscription to Simply Sand Play.. When finished, click the X on the top right side to exit.



16. To uninstall the application use the "Add or Remove Programs" feature in Windows 10.

Need help? Email support@simplysandplay.com